

About Us

The King Faisal Specialist Hospital Foundation “Wareef Charity” is the charitable arm of King Faisal Specialist Hospital and Research Centre (KFSH&RC). Both aim to provide healthcare services with the highest standards to their patients by providing all means to help enhance the experiences of patients and their families.



Our Vision

To be the leading charitable foundation in health and social care in Saudi Arabia.



Our Mission

To support the delivery of healthcare services in King Faisal Specialist Hospital & Research Centre through:

- Taking part in easing the suffering of patients and their families.
- Financing research.
- Participating in raising awareness in the field of health.
- Developing medical endowments in cooperation with leading local and international foundations.

Our Objectives



To support the delivery of specialized medical care



To support disease prevention programs



To provide aid to patients in need



To support cultural and scientific activities that contribute to raising awareness on the culture of health.

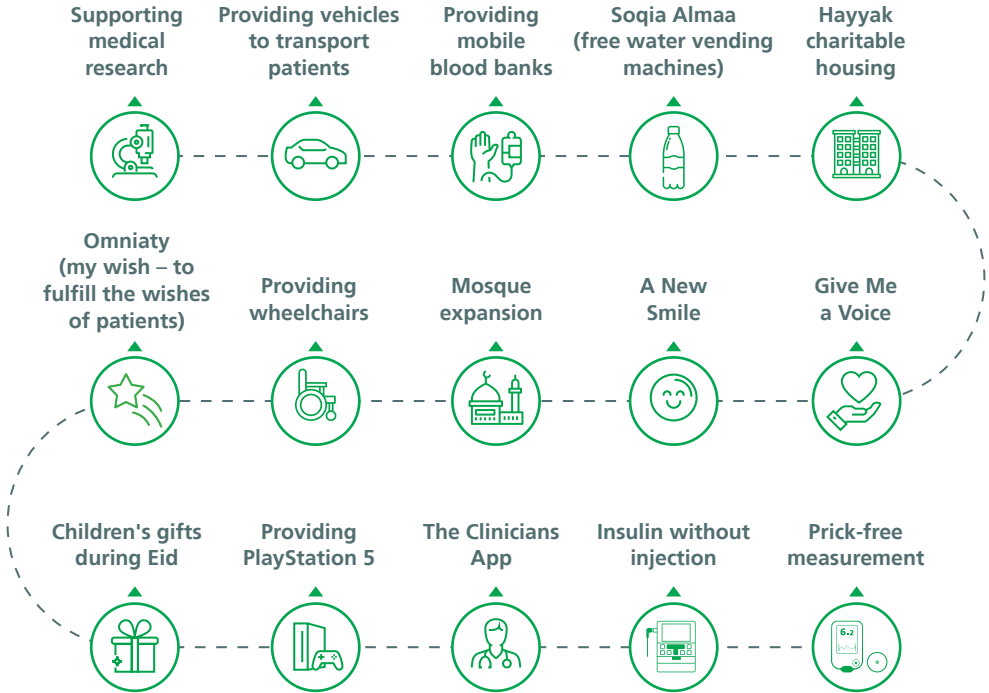


To support scientific and applied research in the medical and health fields.



To support the qualification of skilled Saudi healthcare workers.

Main Projects



With your contribution we shall put a smile on their faces



Wareef Website



Alinma Wareef
Endowment Fund

مصرف الإنماء
alinma bank

King Faisal Specialist Hospital Foundation
SA03 0500 0068 2013 2139 4000